

product name

## LINEAR HIGH BAY

### Product Specifications

- Suitable for Industrial, Retail, Warehouses and Gymnasium
- Long life, low light degradation low maintenance cost
- Suitable for 1-1 replacement for existing fluorescent fixtures and metal halide fixtures
- Energy saving over 50%
- V-hook, Pendant and ceiling mounted installation
- Mercury free
- Lightweight Construction - extruded aluminum
- Reduce CO<sub>2</sub>
- No Flicker, no UV
- Lumileds DS207 chip
- 0 - 10V continuous dimming
- Metal safety grid optional
- Available with Occupancy Sensor, Occupancy and Daylight Sensor
- 7 year warranty with Meanwell Driver

### Product Image



## 50W up to 300W



 LUMILEDS



### Light & Electrical Specifications

Input Power	50W - 300W
Input Voltage	120 - 277VAC & 200 - 480VAC
Frequency	50 / 60 Hz
Luminous Flux	6500lm - 39000lm
CRI (Color Rendering Index)	>80 (CRI>90 optional)
CCT	3500K, 4000K, 5000K
Power Factor (PF)	>0.9
THD	<15%
Optics	120°
Lumen Maintenance	13% @ 50,000 hours
IP Rating	IP40
Operating Temperature	-22° F to +122° F
Body	Cold forged metal, white powder coat
Calculated Lifetime	>80,000 hours
Rated Lifetime	>54,000 hours

**7**  
YEARS  
WARRANTY



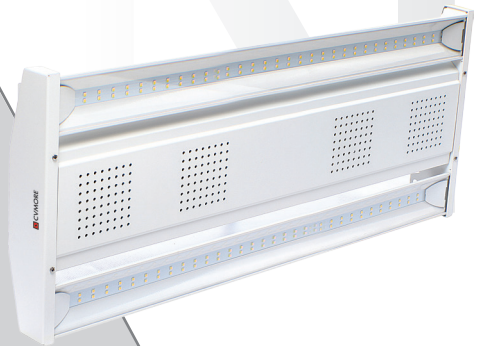
LM-80

LM-79

TM-21

**LINEAR HIGH BAY**
**50W up to 300W**

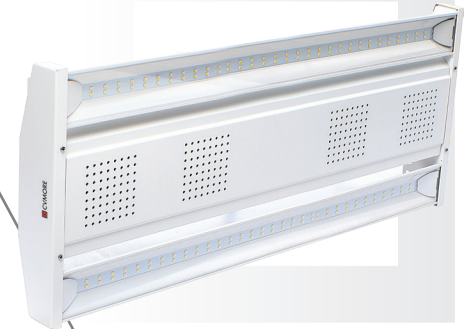
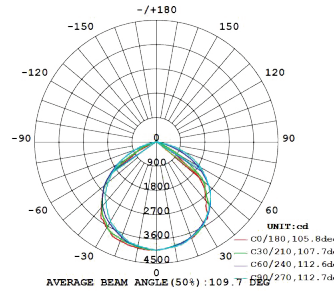
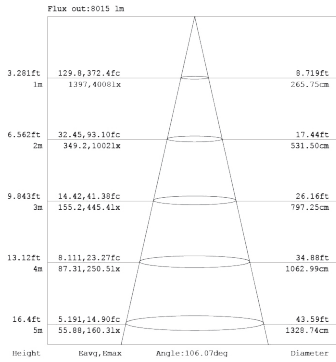
Product Code	CRI	Wattage	Clear Lens	Clear Lens
ULB50WD-50K-600	>80	50W	6500lm	5900lm
ULB80WD-50K-600-MW	>80	80W	10400lm	9600lm
ULB100WD-50K-600-MW	>80	100W	13000lm	12000lm
ULB120WD-50K-1200-MW	>80	120W	15600lm	14000lm
ULB150WD-50K-1200-MW	>80	150W	19500lm	18000lm
ULB200WD-50K-1200-MW	>80	200W	26000lm	24000lm
ULB240WD-50K-1200-MW	>80	240W	31200lm	28500lm
ULB300WD-50K-1200-MW	>80	300W	39000lm	36000lm



Model	Wattage	Lumens Output	Dimmable	Color Temperature	Size	Input Voltage	Accessories
ULB	<b>50</b> - 50W	6500lm	<b>D</b> 0 - 10V Dimmable	<b>35K</b> - 3500K <b>40K</b> - 4000K <b>50K</b> - 5000K	<b>600</b> - 2'	<b>AD</b> Adayo Driver 120 - 277VAC	<b>MS</b> Occupancy sensor  <b>MSDH</b> Occupancy sensor with daylight harvesting  <b>CL</b> Clear Lens  <b>FR</b> Frosted Lens  <b>SG</b> Metal safety Grid Mounting  Surface Mounting Pendant
	<b>80</b> - 80W	10400lm					
	<b>100</b> - 100W	13000lm					
	<b>120</b> - 120W	15600lm					
	<b>150</b> - 150W	19500lm					
	<b>200</b> - 200W	39000lm					
	<b>240</b> - 240W	31200lm					
	<b>300</b> - 300W	26000lm					
					50W 80W 100W - 2'	<b>MW</b> Meanwell Driver 120 - 277VAC	
					120W 150W 200W 240W 300W - 4'	<b>HV</b> High Voltage* 200 - 480VAC  *High Voltage available for 150W 200W 240W 300W	

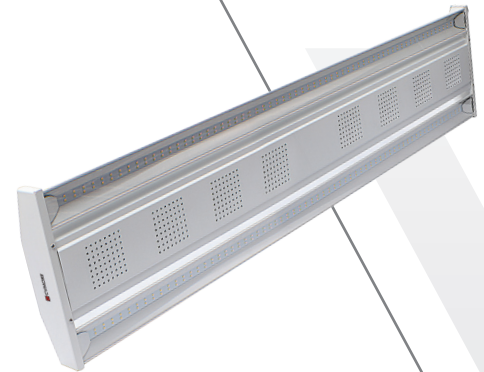
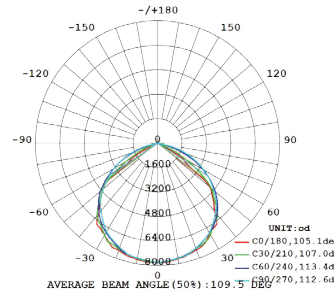
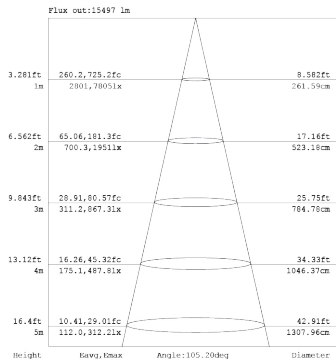
## LINEAR HIGH BAY

### Photometrics



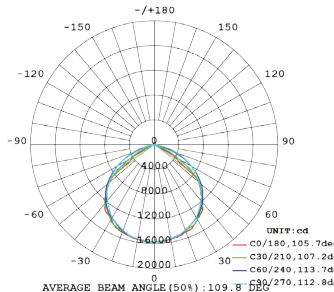
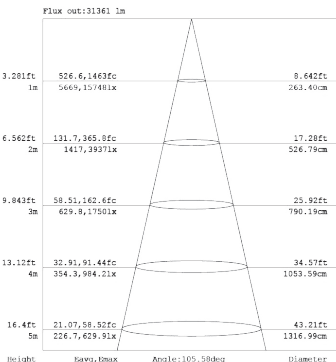
ULB80WD-50K-600-MW-CL Tested in accordance to IESNA LM-79

### 2' • 80W



ULB150WD-50K-1200-MW-CL Tested in accordance to IESNA LM-79

### 4' • 150W



ULB300WD-50K-1200-MW-CL Tested in accordance to IESNA LM-79

### 4' • 300W



LM-80

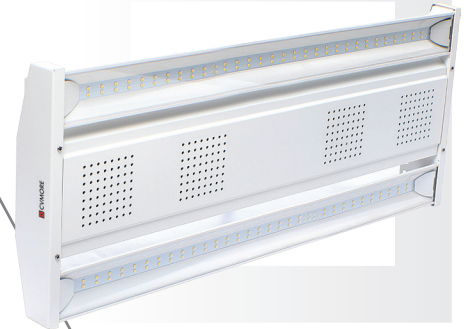
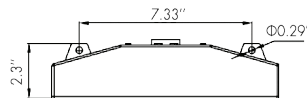
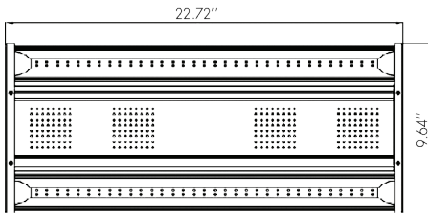
LM-79

TM-21

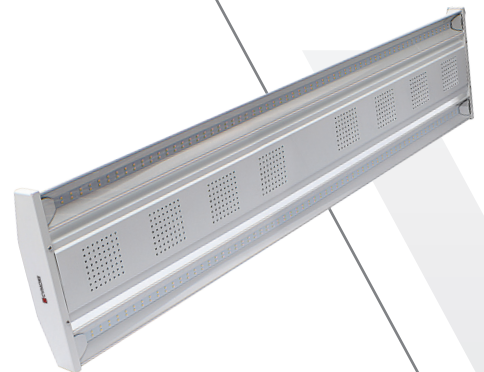
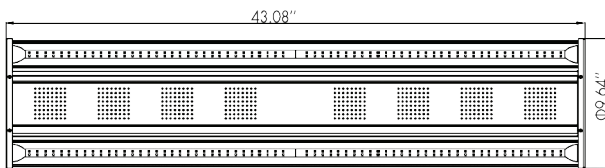
## LINEAR HIGH BAY

### 50W up to 300W

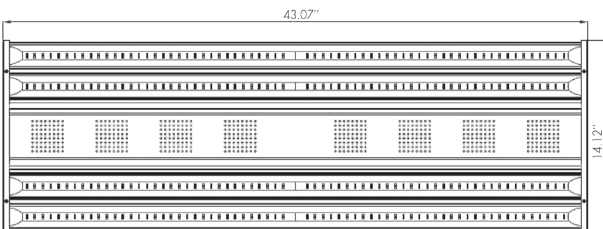
### Dimension Diagrams



### 50W/80W/100W



### 120W/150W/200W



### 240W/300W



LM-80

LM-79

TM-21